



[oakleyproperty.com](https://www.oakleyproperty.com)



Oakley

Your Sussex Property Expert



Green Park Mews, Green Road, Wivelsfield Green, Haywards Heath, RH17



£348,000



- New Homes
- Patio gardens
- Contemporary kitchens
- EPC - TBC
- 2 Bedrooms
- Parking
- Luxury bathrooms



The Property

Specification

KITCHENS

Manufactured by Lime Kitchens
Cashmere coloured soft-close cabinets
Laminate worktops and splashbacks
Stainless steel sink & mixer tap
Bosch fan oven
Bosch induction hob
Extractor hood
Integrated fridge/freezer
Integrated dishwasher
Integrated washer/dryer

FLOORING

Vinyl wood effect floor to main living room kitchen
Carpet to the stairs and bedrooms
Tiled flooring to Bathrooms
Bathroom & Ensuites
Ceramic tiled floors and walls in natural stone design
Zanet wall hung vanity unit basins
Contemporary bath & shower design

GENERAL

Electric central heating with radiators
A spacious first floor landing cupboard provides ample
Storage for usual household items
Generous storage facilities
Allocated car parking space
EV charging facility
New PVC double glazed doors and windows
10 year warranty
Varying sized outdoor spaces

Please note

Photos used are of the show home and main photo is a CGI

The Location

Location

Wivelsfield and the adjacent village of Wivelsfield Green are the core of the Civil Parish of Wivelsfield in the Lewes District of East Sussex. They lie in the low Weald and to the north of the South Downs National Park.

The villages are located 9 miles north of the city of Brighton & Hove. Haywards Heath is 2.5 miles away and Burgess Hill is 3.9 miles away, both with a good selection of mainstream shops, supermarkets and leisure facilities.

There are Secondary Schools in both towns and a choice of Private Schools.

The Sandstone church of St Peter & St John the Baptist is located in Church Lane, and the Village Hall is located in Eastern Road. Films are regularly shown on Sundays in the Hall. Recreational grounds are used by local clubs, community organisations and sports teams.

Wivelsfield Village Day is held in July each year on the recreation ground. The Village has its own theatre, named The Wivelsfield Little Theatre, holding productions in the Village Hall and the Church.

The Parish includes several woods and small farms, the small brook which runs through the village is tributary of the River Ouse, which flows to Newhaven. There are 20 Listed buildings in the Parish, including the Grade I Listed building Great Ote Hall.

T: 01273 487444

Agents Notes

Tenure Freehold

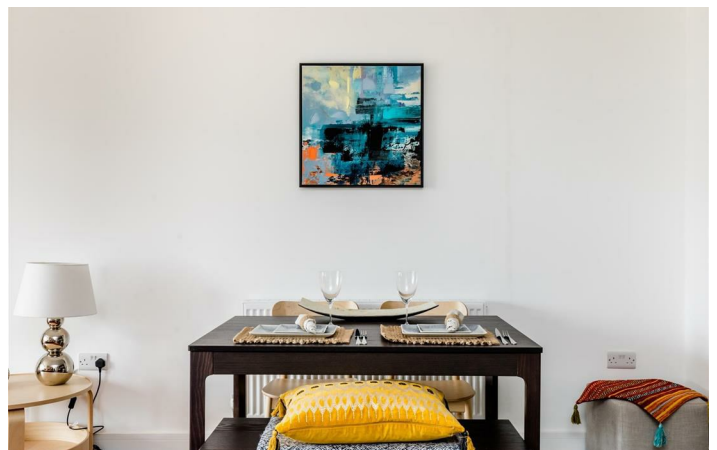
Lease Term

Years Remaining

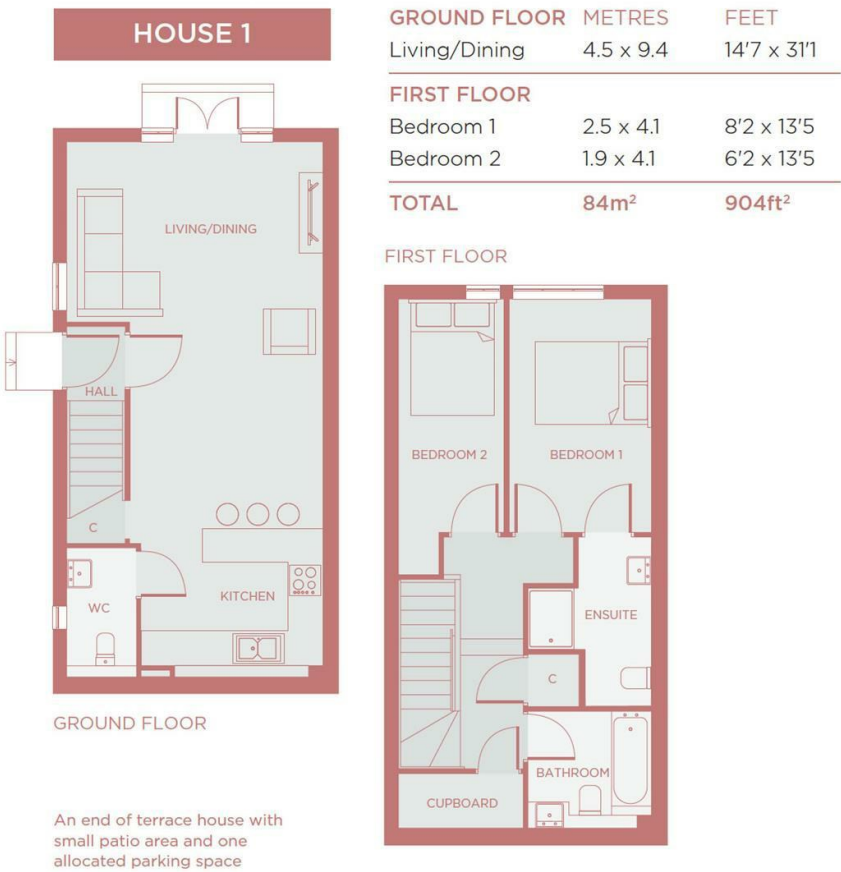
Ground Rent

Service Charge TBC

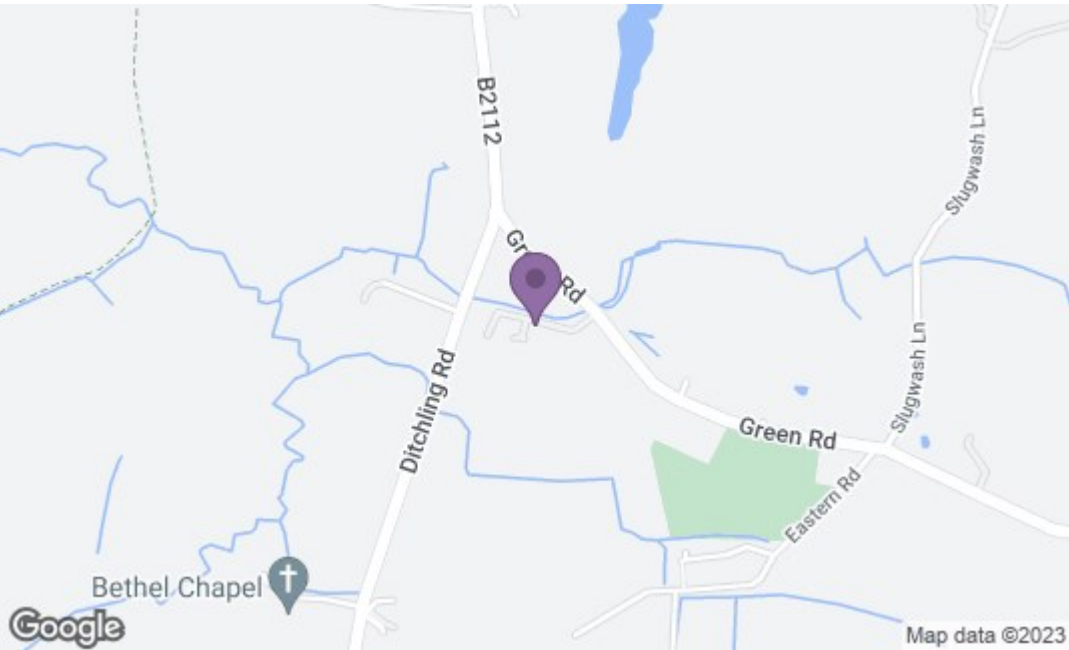
Council Tax Band



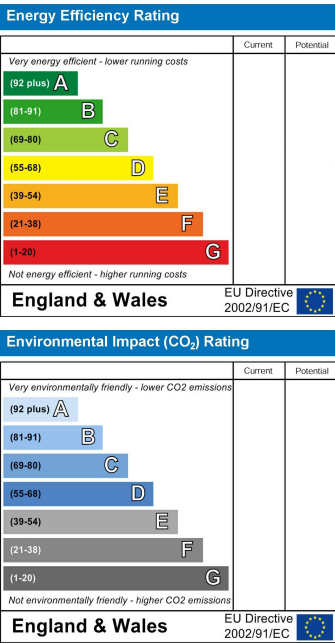
Floor Plan



Location Map



Energy Performance Certificate



Brighton & Hove City Office
Residential Sales & New Homes

T 01273 688881
E brighton@oakleyproperty.com

Shoreham-by-Sea Office
Residential Sales, Lettings & New Homes

T 01273 661577
E shoreham@oakleyproperty.com

Lewes Town & Country Office
Residential Sales, Lettings and New Homes

T 01273 487444
E lewes@oakleyproperty.com

The London Office
Residential Sales

T 020 839 0888
E enquiries@tlo.co.uk

Please Note: These details have been produced in good faith and are believed to be accurate based upon the information supplied but they are not intended to form part of a contract. All statements contained in these particulars as to the properties are made without responsibility on the part of Oakley, the vendors or lessors and are NOT to be relied on as statements or representations of fact. Any intending purchasers must satisfy themselves by inspection or otherwise as to the correctness of each of the statements contained in these particulars. The vendors, Oakley and any person who work in their employment do not have any authority to make or give any representation or warranty. The total floor area shown has been taken from the EPC.